



Vander 001



001 Front Exterior



002 Main Facade



003 Back Facade

Vander

— 001





Our innovative housing solution is designed to bridge the gap between affordability and quality. By leveraging cutting-edge construction methods, we ensure homes are accessible to everyone while maintaining modern standards.

Materials

+ STEEL

Steel offers unmatched durability and strength, making it ideal for modern construction. Its versatility ensures resilience in both structural and aesthetic applications.

+ AMERICAN WOOD

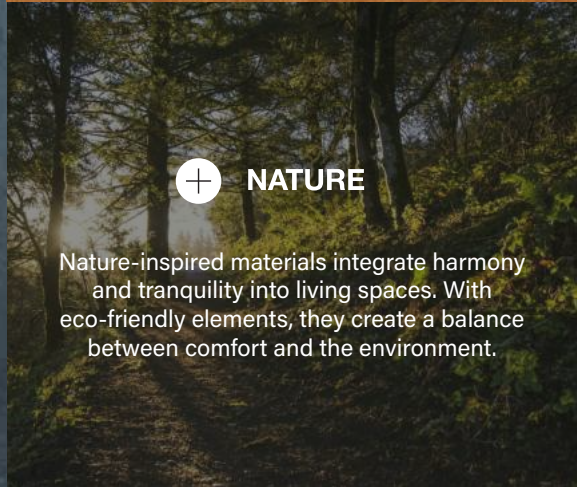
American wood brings warmth and timeless elegance to any space. Sourced sustainably, it provides a natural finish that complements modern design.

+ CONCRETE

Concrete delivers a sleek, industrial aesthetic with superior durability. Perfect for minimalist and contemporary designs, it ensures longevity and structural integrity.

+ NATURE

Nature-inspired materials integrate harmony and tranquility into living spaces. With eco-friendly elements, they create a balance between comfort and the environment.



1-BEDROOM
INTERIOR





001 Interior finishes.



LIVING ROOM

Targeted at underserved communities and growing urban centers, our approach prioritizes accessibility and scalability. With designs that cater to varied geographic and cultural contexts, we aim to redefine modern living."

Interior / Open-plan Dining Room Kitchen

amazing interiors
and spectacular
finishes

Using eco-conscious materials and streamlined construction processes, our homes emphasize sustainability. Each project reflects our commitment to efficiency, quality, and environmental stewardship.



Interior

/ Bathroom





2.5 M

Scalability and collaboration are at the core of our vision. From large-scale developments to community projects, we offer solutions tailored to create impactful and sustainable growth.

Interior
/ Bathroom





Interior / 1 Bedroom

amazing interiors
and spectacular
finishes

Our housing initiative drives significant economic benefits, fostering local employment and reducing housing deficits. Every unit is a step toward building stronger and more self-sufficient communities.



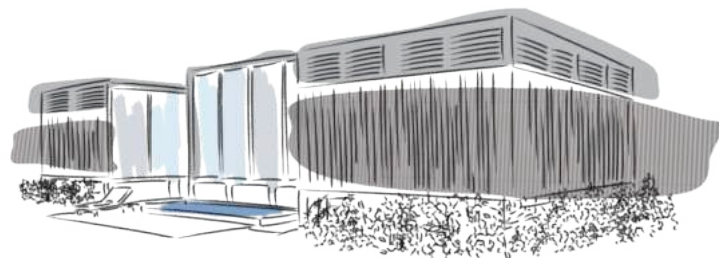


5.5 M

Sustainability is the foundation of our housing solutions. With energy-efficient designs and renewable materials, we're creating homes that reduce carbon footprints and promote eco-friendly living.

2-BEDROOM SOLUTION

DETAILS



Land size	120 m2	Water	●
Construction	120 m2	Electricity	●
Bedrooms	2	Gas	⊘
Bathrooms	2	Fully equipped kitchen	●
		Dining room	●
		Living room	●
		Swimming pool	●
		Laundry room	●



BeMotion

www.bemotion.io